

# AirKoe Curtain Systems Specialist



Product catalogue



# Table of contents

## WINDBREAK NETTING

- Safe System Plus 6
- Safe System (NEW, with CE certification) 8
- Centre roller under opening 10
- Centre bar bottom roller 12
- Steel wire bottom roller 14
- Steel wire double tube 16
- Sliding panels 18
- Door systems roller door 20
- Door systems sectional door 22
- Airkoe climate computer 23
- Windbreak mesh 24
- Fans 26

## LIGHT AND VENTILATION RIDGES

- Saddle roof with side ventilation 30
- Curved ridge with side ventilation 32
- Saddle roof with open ridge 34
- Overhang ridge (single and double-sided) 36

## OTHER PRODUCTS

- Special projects 43







# Why Airkoe

Airkoe was established in 2001 when two former dairy farmers, Henk Dijkstra and Peter Groenveld, anticipated changes in the approach to cow shed ventilation.

Originally, free stall barns were fitted with a small ventilation valve and a ridge that was often no more than 15 cm wide, but by the end of the 1990's farmers were removing window frames and walls, to give the cows more air and light inside. The newly created spaces were fitted with flexible canvas that could be reeled off from the bottom up. A new market was born!

Today, Airkoe is actively involved in the agricultural sector, as well as in other sectors, such as supplying and fitting products for industries and sporting venues. Airkoe is well-equipped with solutions for any spaces, that require flexible working canvas and light streets.

## **Airkoe BV**

Dearsum nr 3 8644 VP Dearsum, The Netherlands

Phone: +31 515 23 03 04

E-mail: [info@airkoe.nl](mailto:info@airkoe.nl) [www.airkoe.nl](http://www.airkoe.nl)



[www.facebook.com/Airkoe](https://www.facebook.com/Airkoe)



[@airkoe](https://twitter.com/airkoe)





# Windbreak netting









# Windbreak netting

## SAFE SYSTEM PLUS

Folding curtain, closing from the bottom up

### Operation

Turning the top bar, which is directly connected to a powerful 380-volt electric drive, will move the aluminium tube with the canvas attached in compartments up or down. Hems divide the opening into compartments of about 60 cm each. Rods of 0.5 inch in diameter are inserted into the hems for strength and stability. The system comes with an inner and an outer bracket as standard to prevent the canvas from touching any (optional) bird screen/windbreak mesh that could cause damage and sticking.

### Construction

The system comes with a powerful 380-volt electric drive, which is directly connected to the top bar. No bottom drive has been installed to prevent the motor from losing power. The main advantage of the system is its ability to control more than 100 metres of canvas without interruption, using only one motor. The covers at either end of the safe system come with a 70 cm wide canvas hood, usually in the colour of the folding curtain. The entire length is finished with a secondary canvas. Attached to the top and bottom of this canvas are welded strings that run through the aluminium tubes, to give an even more complete finish. Not surprisingly, Airkoe offers a 5-year full warranty on this system!



### Advantages:

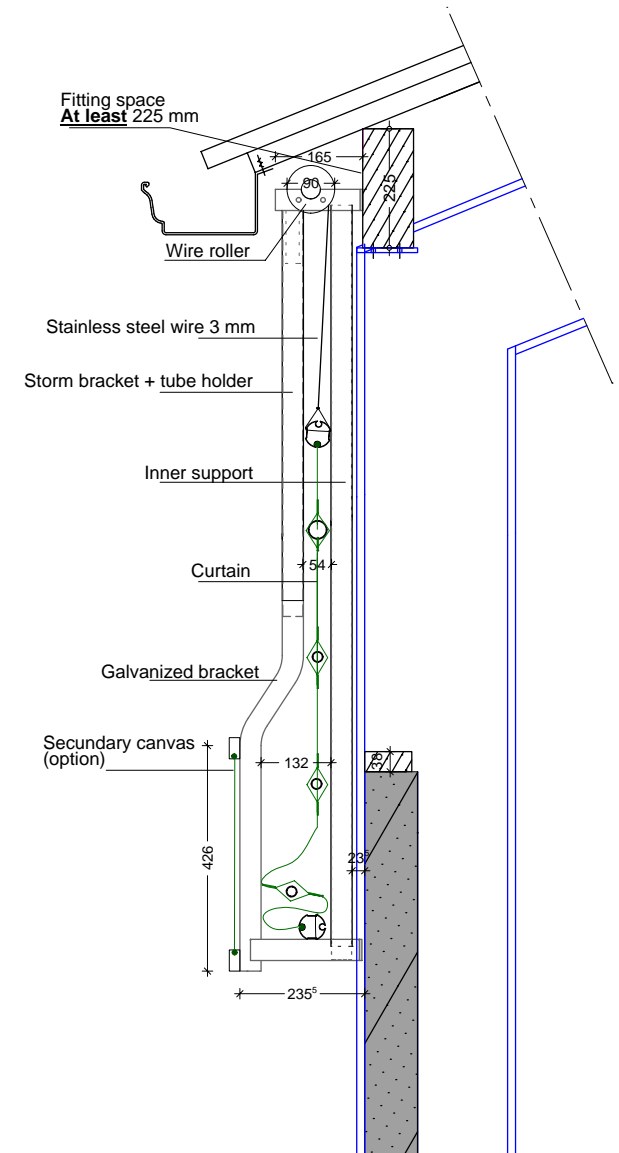
- 100 % Safe/ CE certified
- >100 m without interruption
- suitable for large openings
- 5 year full warranty
- aesthetically very pleasing!





# Windbreak netting

## SAFE SYSTEM PLUS





# Windbreak netting

## SAFE SYSTEM

Folding curtain, closing from the bottom up

### Operation

Turning the top bar which is directly connected to a powerful 380-volt electric drive, will move the aluminium tube with the canvas attached in compartments up or down. Hems divide the opening into compartments of about 60 cm each. Rods of 0.5 inch in diameter are inserted into the hems for strength and stability. The system comes with an inner and an outer bracket as standard to prevent the canvas from touching any (optional) bird screen/windbreak mesh that could cause damage and sticking.

### Construction

The system comes with a powerful 380-volt electric drive, which is directly connected to the top bar. No bottom drive has been installed to prevent the motor from losing power. The main advantage of the system is its ability to control more than 100 metres of canvas without interruption, using only one electric drive. The covers at either end of the safe system come with a 70 cm wide canvas hood, usually in the colour of the folding curtain. That is why the safe system is low maintenance with a long service life. Not surprisingly, Airkoe offers a 5-year full warranty on this system!



### Advantages:

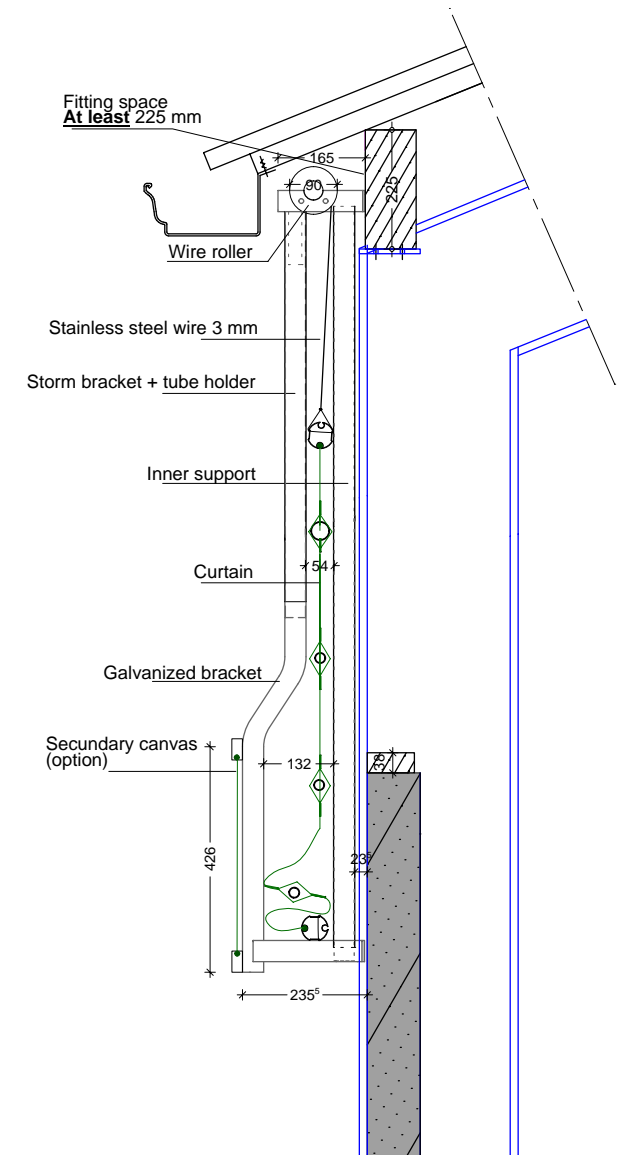
- 100 % Safe/ CE certified
- >100 m without interruption
- suitable for large openings
- 5-year full warranty





# Windbreak netting

## SAFE SYSTEM





# Windbreak netting

## CENTRE ROLLER BOTTOM OPENING

Roller curtain, centre rolling,  
closing from the top down

### Operation

The system is always divided into two canvases, so a 4-metre opening will require two 2-metre canvases. The system will always use a centre bar drive, controlled by a motor in rail. The curtain has a welded string on either side, attached to a pull-up bar at the top and a winding tube at the bottom (above the canvas). For large openings, the system comes with 1.5 inch tubular storm brackets, often used for freely supported spans that allow traffic underneath. An inner support is optional.

### Construction

The system comes with a powerful 220-volt electric drive/ hand winch mechanism, which is directly connected to the centre bar. The covers at either end of the rolling system come with a 60 cm wide hood made of galvanized materials. The winding tube is made of aluminium. The barn must be closed up for approx. 120 cm on one side to house the drive unit. Larger barns may benefit from controls in the centre, in which case, two metres have to be closed off for the drive system.



### Advantages:

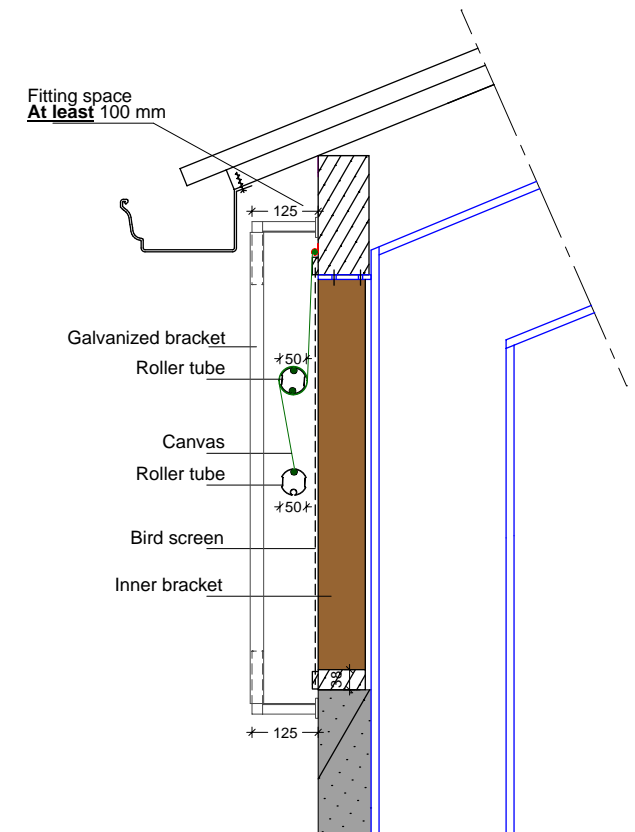
- 100 % Safe/ CE certifie, provided that the centre roller is sufficiently screened off against jamming
- robust operation
- 1 year full warranty, reducing thereafter
- suitable for openings up to 4.50 m
- when open, traffic may run underneath (freely supported spans)





# Windbreak netting

## CENTRE ROLLER BOTTOM OPENING





# Windbreak netting

## CENTRE BAR BOTTOM ROLLER

Roller curtain with top bar drive, closing from the bottom up

### Operation

Turning the top bar, which is directly connected to a powerful 220 or 380-volt electric drive, will move the aluminium tube with the canvas attached up or down. Using a right-angle transmission, the motor is reconnected to the bottom roller tube. The curtain has a welded string on either side, attached to a pull-up bar at the top and a winding tube at the bottom. For large openings, the system comes with support/bird screen as standard to prevent the canvas from being blown inside by the wind and causing damage. An inner support is optional.

### Construction

The system comes with a powerful 220 or 380-volt electric drive, which is directly connected to the top bar and the bottom drive. The covers at either end of the rolling system come with a 60 cm wide hood made of galvanized material. The pull-up bar and a winding tube are made of aluminium; the traction wire is attached to the bar using a special clamp. The barn must be closed up for approx. 120 cm on one side to house the drive unit.



### Advantages:

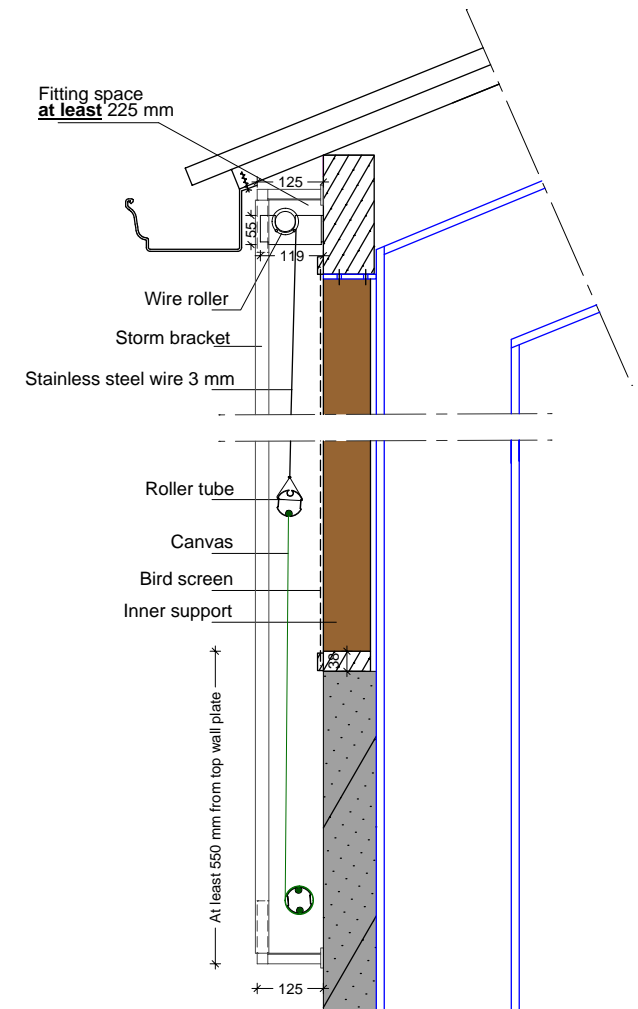
- 100 % Safe/ CE certified, provided that the bottom roller is sufficiently screened off against jamming
- robust operation (tube rather than steel wire)
- suitable for openings up to 3 m
- 1 year warranty, reducing thereafter
- aesthetically very pleasing!





# Windbreak netting

## CENTRE BAR BOTTOM ROLLER





# Windbreak netting

## STEEL WIRE BOTTOM ROLLER

Roller curtain with stainless steel traction wire drive, closing from the bottom up

### Operation

The system is driven by stainless steel 5 mm traction wire. This is raised through a winch mechanism, which is connected to the bottom roll-up tube. The curtain has a welded string on either side, attached to a pull-up bar at the top and a winding tube at the bottom. For large openings, the system comes standard with support/bird screen as standard to prevent the canvas from being blown inside by the wind and causing damage. An inner support is optional.

### Construction

Available both for manual operation or with motor and control button and optional climate computer / rain sensor. The system comes with a powerful 220 or 380-volt electric drive, which is directly connected to the winch mechanism and the bottom drive. The covers at either end of the rolling system come with a 60 cm wide hood made of galvanized material. The pull-up bar and winding tube are made of aluminium; the traction wire is attached to the bar using a special clamp. The barn must be closed up for approx. 120 cm on one side to house the drive unit.



### Advantages:

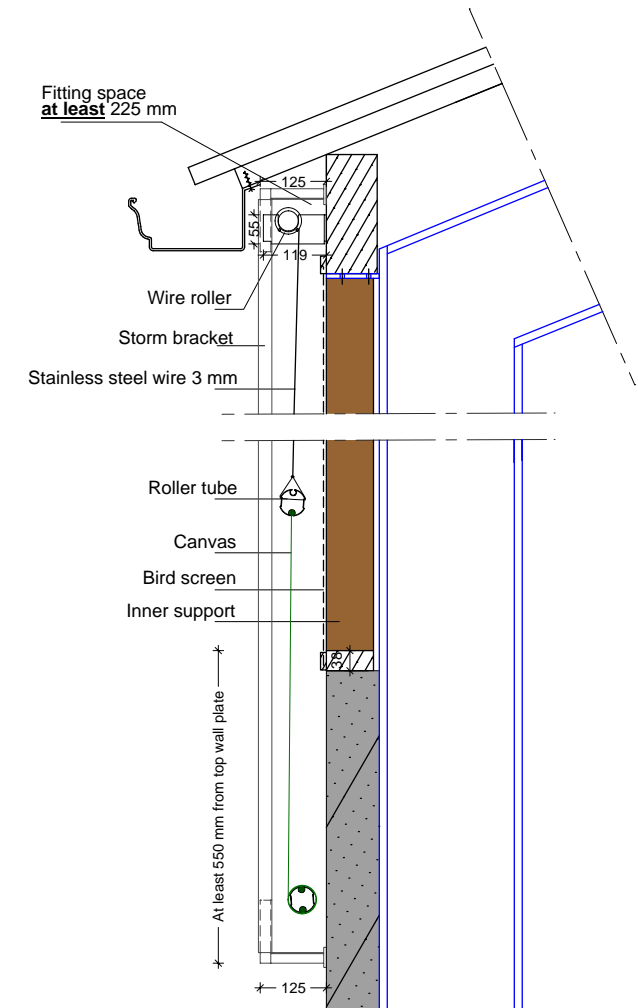
- 100 % Safe/ CE certified, provided that the bottom roller is sufficiently screened off against jamming
- suitable for openings up to 3 m
- 1 year warranty, reducing thereafter
- aesthetically very pleasing!





# Windbreak netting

## STEEL WIRE BOTTOM ROLLER





# Windbreak netting

## STEEL WIRE DOUBLE TUBE

Pull-up curtain, with stainless steel traction wire drive unit, closing from the bottom up

### Operation

The system is driven by stainless steel 5 mm traction wire, wound up through a winch mechanism. The curtain has a welded string on one side, attached to a pull-up bar at the top and a ballast bar at the bottom of the canvas. In an open situation, the canvas will hang in front of the wall. For large openings, the system comes standard with support/bird screen as standard to prevent the canvas from being blown inside by the wind and causing damage. An inner support is optional.

### Construction

Available both for manual operation or with motor and control button, and with optional climate computer / rain sensor. Suitable for large openings, provided that the required bottom wall is present. The following applies: 0.5 x net ventilation opening + 25 cm wall. The covers at either end of the rolling system come with a 60 cm wide hood made of galvanized material. The pull-up bar and winding tube are made of aluminium; the traction wire is attached to the bar using a special clamp. The barn must be closed up for approx. 70 cm on one side to house the drive unit.



### Advantages:

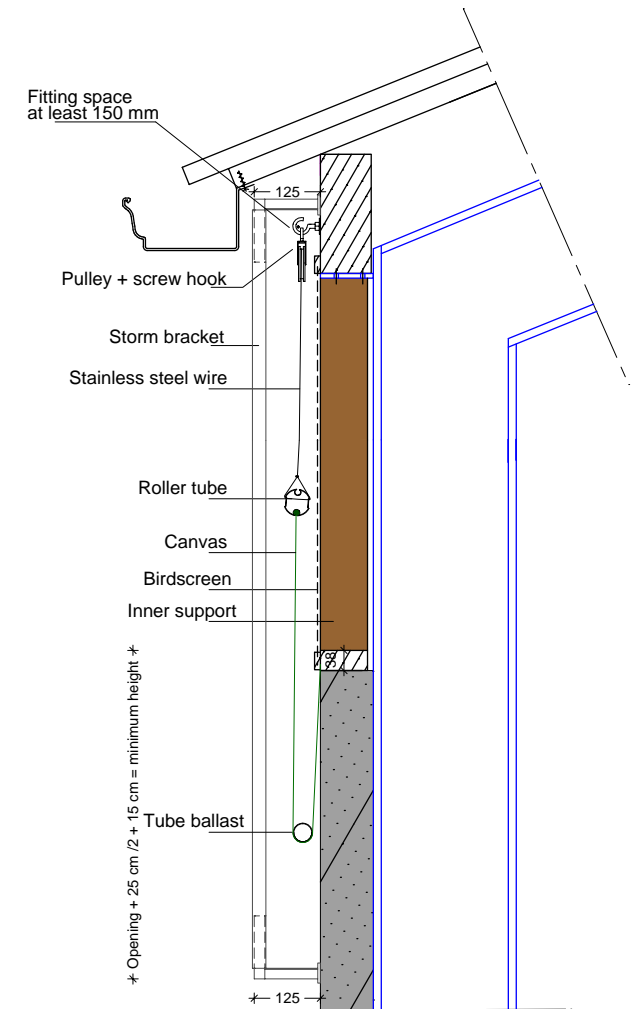
- 100 % Safe/ CE certified
- suitable for openings up to 3 m
- 1 year warranty, reducing thereafter





# Windbreak netting

## STEEL WIRE DOUBLE TUBE





# Sliding panels

## POLYCARBONATE

### Opening from top to bottom

In places with a ventilation opening that require a maximum amount of daylight and a higher than average insulation value of the building this system offers the perfect solution.

The sliding panels are produced in 16 mm, multiple chamber and aluminium framed Polycarbonate plates, fit for openings up to 1.50 m.

Operation: motor driven or manually by crank, both inside or outside is possible. Maximum height of the panels will also be determined by the height of the wall section under the opening.

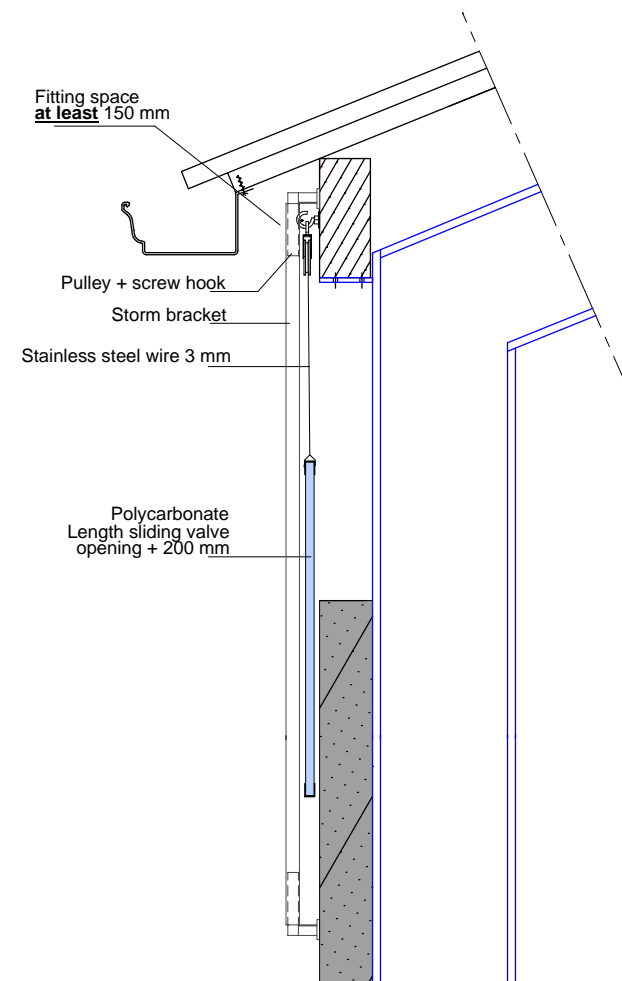






# Sliding panels

## POLYCARBONATE





# Door systems

## ROLLER DOOR

### Operation

The door is activated by way of a powerful tube motor located in the centre bar. Connecting the bars can bridge a distance of up to 20 metres. The sides of the door are finished with steel covers in which the profiles are hidden. A good alternative for feeding places or front walls of barns.

### Construction

Driven by a powerful 220v tube motor, with remote control if so required. The motor is located inside the centre bar and rolls the canvas up. Various types of canvas and/or windbreak netting net can be used. The door can be mounted inside or outside the opening.



### Advantages:

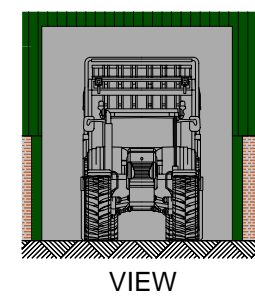
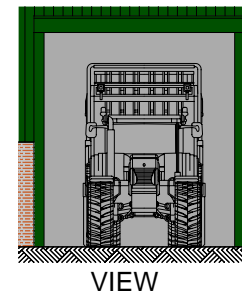
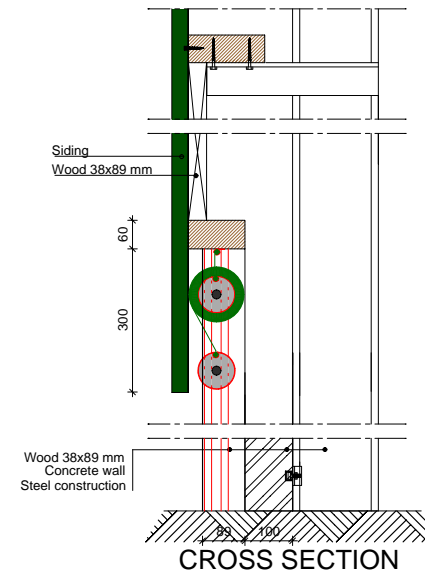
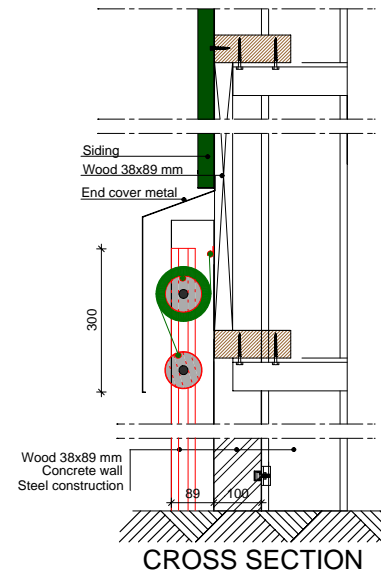
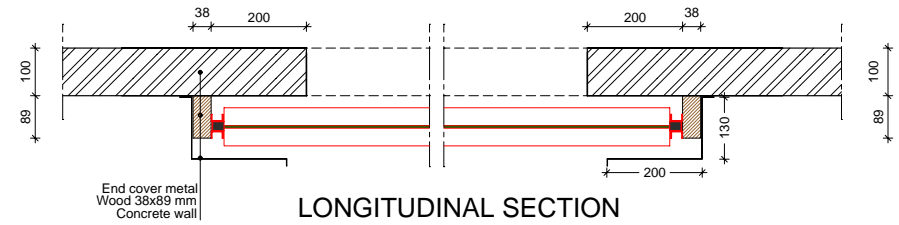
- Attractively priced
- Ventilation possible
- Up to 500 cm high and 20 m wide
- One year full warranty
- Easy operation





# Deursystemen

## ROLDEUR





# Door systems

## SECTIONAL DOOR

### Operation

The door is activated by way of a powerful tube motor located in the centre bar. The horizontal profiles provide stability at high wind pressure. The sides of the door are finished with steel covers in which the profiles are hidden.

The door is mounted in front of the opening, preferably on the inside of the opening.

### Construction

Driven by a powerful 220v tube motor, with remote control if so required, inside the drive tube that works as a reel for the canvas and the profiles. The sections are divided into compartments of approx. 75 cm. Various types of canvas and/or wind net can be used. The top of the roll-up mechanism is finished using a canvas cover in the required colour.



### Advantages:

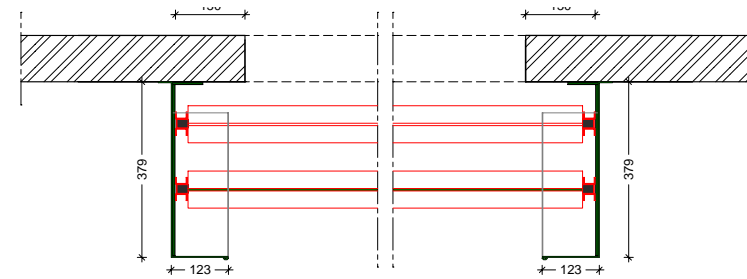
- Alternative for overhead doors
- Ventilating
- Up to 500 cm high and 500 cm wide
- 1 one year full warranty



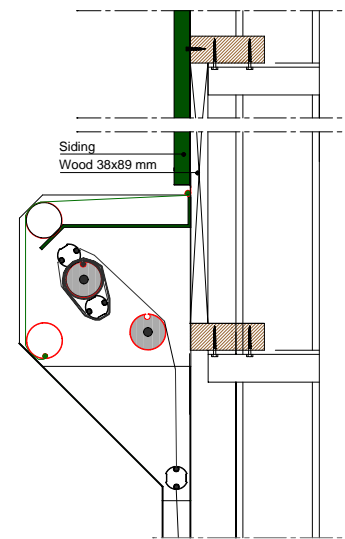


# Deursystemen

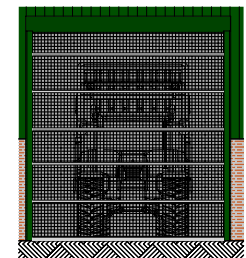
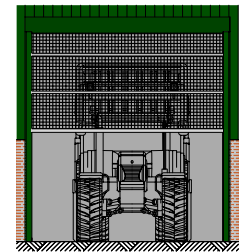
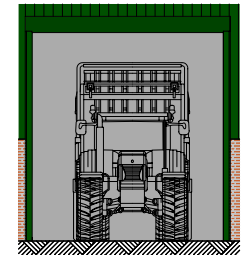
## ROLDEUR



LONGITUDINAL SECTION



CROSS SECTION



VIEW



# Climate computer

## Auto-controlled ventilation

### Operation

Auto-controlled ventilation has recently become very popular, so, Airkoe has developed its own climate computer based on practical experience.

The climate computer can control up to four curtains individually (i.e. the openings may vary in height).

Airkoe makes every effort to offer a system that meets all safety requirements. In order to guarantee your safety, the Airkoe Climate Computer has been fitted with a so-called “Pulse - Pause Roll-up Rhythm” whereby a small section of the curtain rolls up and then stops for a few seconds before continuing.

### Our climate computer is suitable for controlling:

- Curtains
- Light
- Fans, etc.

### Advantages:

- unlimited possibilities
- suitable for 4 curtains
- attractively priced, even more so in case of several openings
- suitable for Yardstick of Sustainable Stock holding Criteria (Maatlat Duurzame Veehouderij - M.D.V.)





# Windbreak mesh

Dense canvas, also KIWA Certification. Canvas in various colours, such as moss-green, grey, black and white transparent (light-transmitting). For many applications, everything is made to measure!



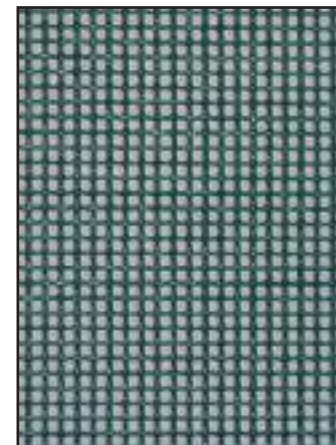
**Velitex 91%**

Application:  
Sliding curtain, open front  
barns, caravan storage



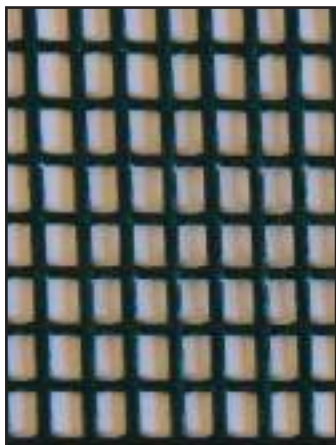
**Airkoe Ged. PVC 85%  
Windbreak**

Application:  
Pig houses, aviaries,  
chicken barns and open  
front barns



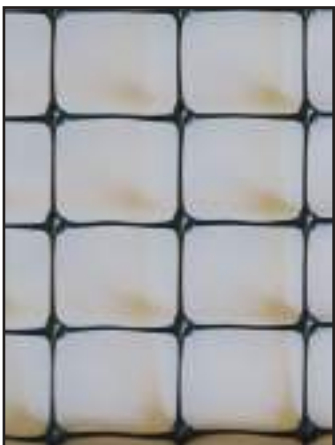
**Airkoe Ged. PVC 70%  
Windbreak**

Application:  
Pig houses, aviaries,  
chicken barns and open  
front barns



**Airkoe Ged. PVC 50%**

Application:  
Cattle, pig and poultry  
barns



**Bird net**

Mesh: 12x12 mm  
Application:  
Mainly cattle barns



**Bird net, extra heavy  
duty**

Mesh: 25x25 mm  
PVC of 5 en 10 metre wide.  
Application:  
Mainly cattle barns



# FANS

## Operation

The fans from Airkoe helps to maintain a pleasant, cool environment in dairy barns. The high-volume fan plays a key role in optimizing the indoor environment of livestock houses. Extra-large fans in livestock houses ensure uniform air distribution by drawing in warm air from above the fan and pushing this downwards and outwards in a broad cone. This allows the introduction of fresh outdoor air, which is then circulated across the entire dairy barn.

## Construction

The big fans may be provided with step less control. The drive for the fans are largely silent.

## Advantages:

- No heat stress
- Little or no production decline
- Feed intake remains up to standard





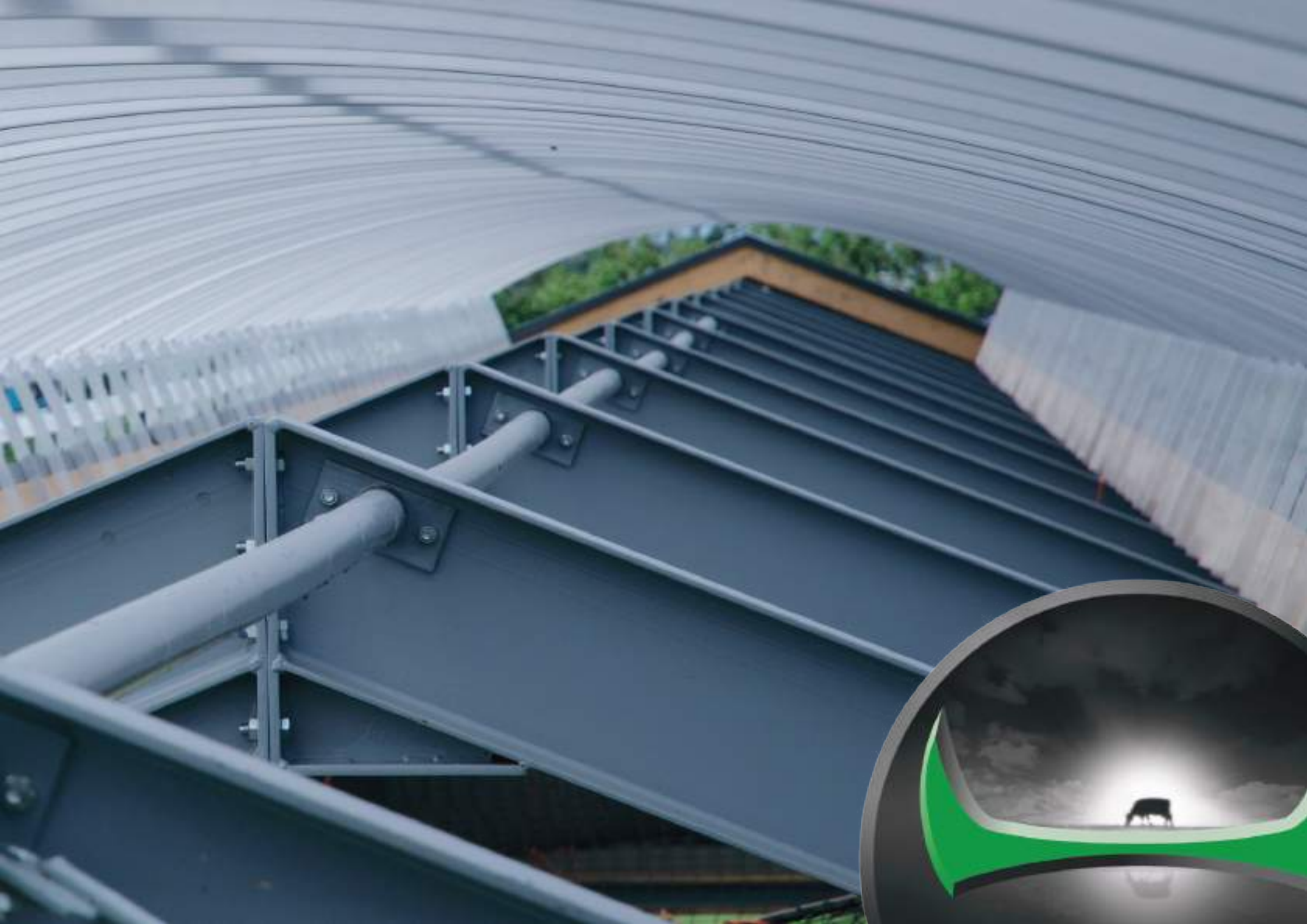




# Barn ridges









# Barn ridges

## SADDLE ROOF WITH SIDE VENTILATION

### Operation

The saddle roof with side ventilation (ZZV) is a light street that gives 100% protection against rainwater and snow; it also allows plenty of natural light to enter your barn.

The chimney effect through the wind baffle plates ensures the proper discharge of hot and polluted air. The height of the wind baffle plate plays an important role in this process. Every Airkoe light street is custom made for the best possible air extraction.

### Construction

The ZZV consists of a strong aluminium frame on which the light sheets are mounted. The light sheets are made of multi-layered polycarbonate with UV protection to prevent fading.

#### Advantages:

- no rain/snow infiltration
- aesthetically very pleasing
- combination of two different polycarbonate plates possible





## Properties of the saddle roof with side ventilation:

### Light sheet:

Multi-layered polycarbonate light sheet

### Construction of the light sheet:

10 mm clear/opal or athermic (new)

### Wind baffle plate:

Aluminium or plastisol grey, incl. brushes

### Aluminium profiles (construction):

Untreated aluminium

### Pattern:

1250 mm through to clear width 2500 mm

1050 mm from clear width 2500 mm

700 mm from clear width 4000 mm

### NEN standardisation:

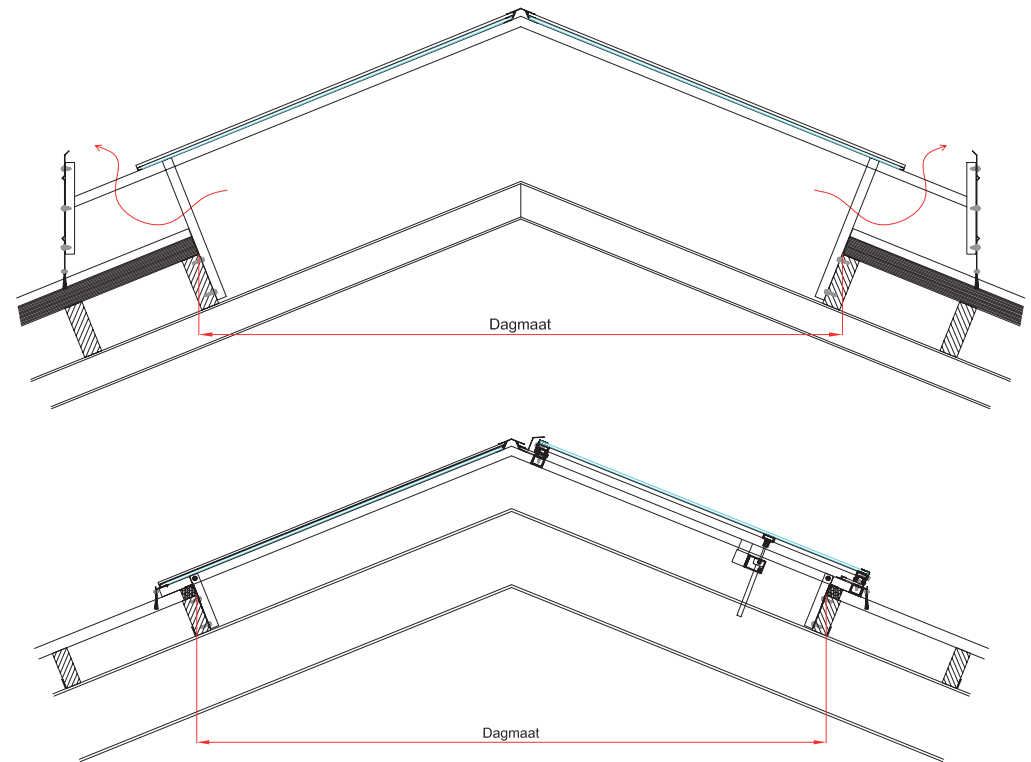
NEN 6065

### Fire category:

B1

### Protection:

UV-resistant, highly impact-resistant



ALSO AVAILABLE WITHOUT  
SIDE VENTILATION



Ventilation hatch (optional)  
1250 x 1250mm (l x w)  
electrical or manual



# Barn ridges

## CURVED RIDGE WITH SIDE VENTILATION

### Operation

The curved ridge with side ventilation is the latest light ridge in the Airkoe product range. The curved ridge with side ventilation (GZV) is a very sound construction; a major advantage is the attractive spatial view from the inside.

This new light ridge is available in various sizes. Natural light has a healthy effect on both you and your cattle.

Air extraction is an important point of interest for the ridge. The chimney effect through the wind baffle plates ensures the proper discharge of hot and polluted air. The height of the wind baffle plate plays an important role in this process. Every Airkoe light street is custom made for the best possible air extraction.

### Advantages:

- very high load carrying capacity (snow)
- no rain/snow infiltration
- aesthetically very pleasing





## Properties of the curved ridge with side ventilation:

### Light sheet:

Multi-layered polycarbonate light sheet

### Construction of the light sheet:

10 or 16 mm clear/opal or athermic (new)

### Wind baffle plate:

Aluminium or plastisol  
(standard in RAL7016)  
Including brush connection

### Aluminium profiles. (construction):

Untreated aluminium

### Pattern:

1050 mm through to clear width 4000 mm  
700 mm from clear width 4000 mm

### NEN standardisation:

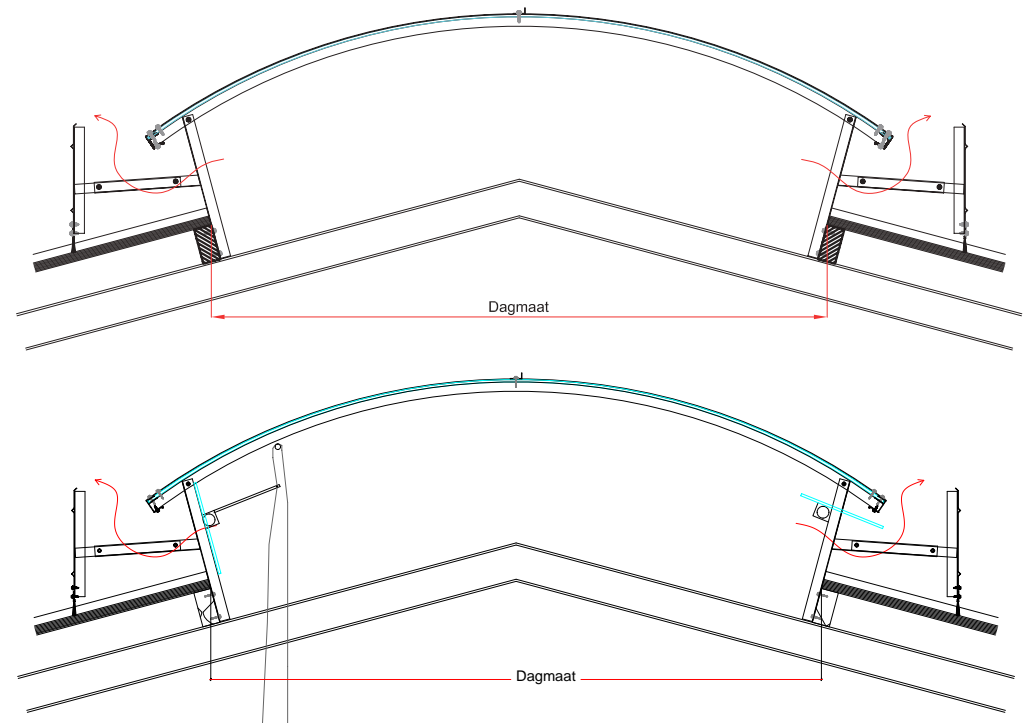
NEN 6065

### Fire category:

B1

### Protection:

UV-resistant, highly impact-resistant



OPTIONEEL MET AFSLUITBARE KANTELEKLEP



# Barn ridges

## SADDLE ROOF WITH OPEN RIDGE

### Operation

Proper ventilation begins with proper extraction of spent air.

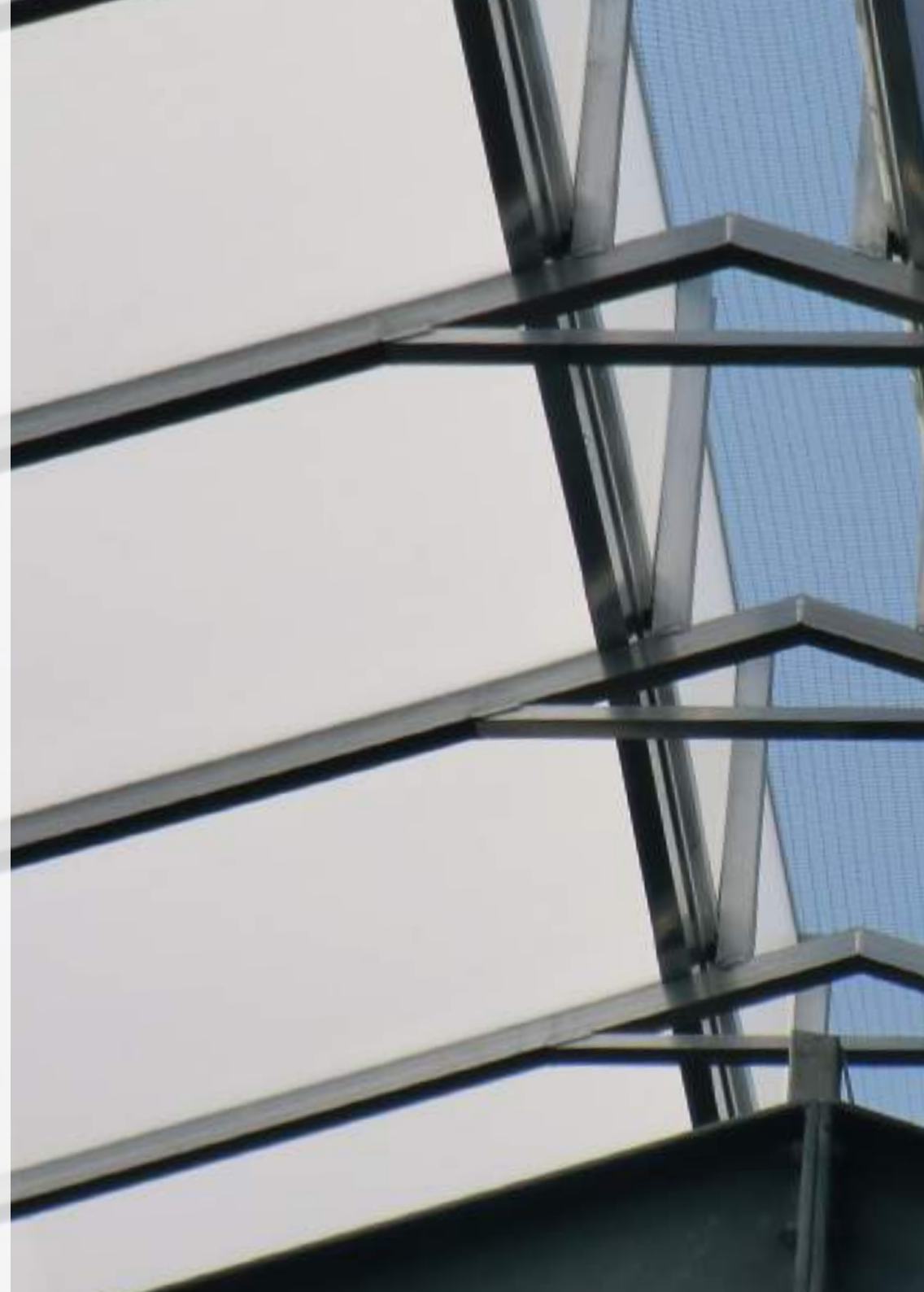
For that reason, proper suction in the barn ridge is of great importance. As well as extracting spent air, the ridge is also an ideal spot to allow natural light into the barn. Being at the highest point it optimises the light and minimises the effect of solar radiant heat.

The saddle roof with open ridge creates suction through the so-called chimney effect. The suction capacity of the ridge depends mostly on the chimney height and width. Airkoe manufactures all its light streets to guarantee the best possible air extraction.

As well as an opening for extracting spent air in the barn, the ridge has also a transparent polycarbonate sheet. These sheets are double-walled and spread the light inside the barn, while reducing the effects of solar radiant heat.

### Advantages:

- optimum chimney effect
- aesthetically very pleasing





## Properties of the saddle roof with open ridge:

### Light sheet:

Multi-layered polycarbonate light sheet

### Construction of the light sheet:

10 or 16 mm clear/opal or athermic (new)

### Wind baffle plate:

Aluminium or plastisol  
(standard in RAL7016)  
Including brush connection

### Aluminium profiles (construction):

Untreated aluminium

### Pattern:

1050 mm through to clear width 4000 mm  
700 mm from clear width 4000 mm

### NEN standardisation:

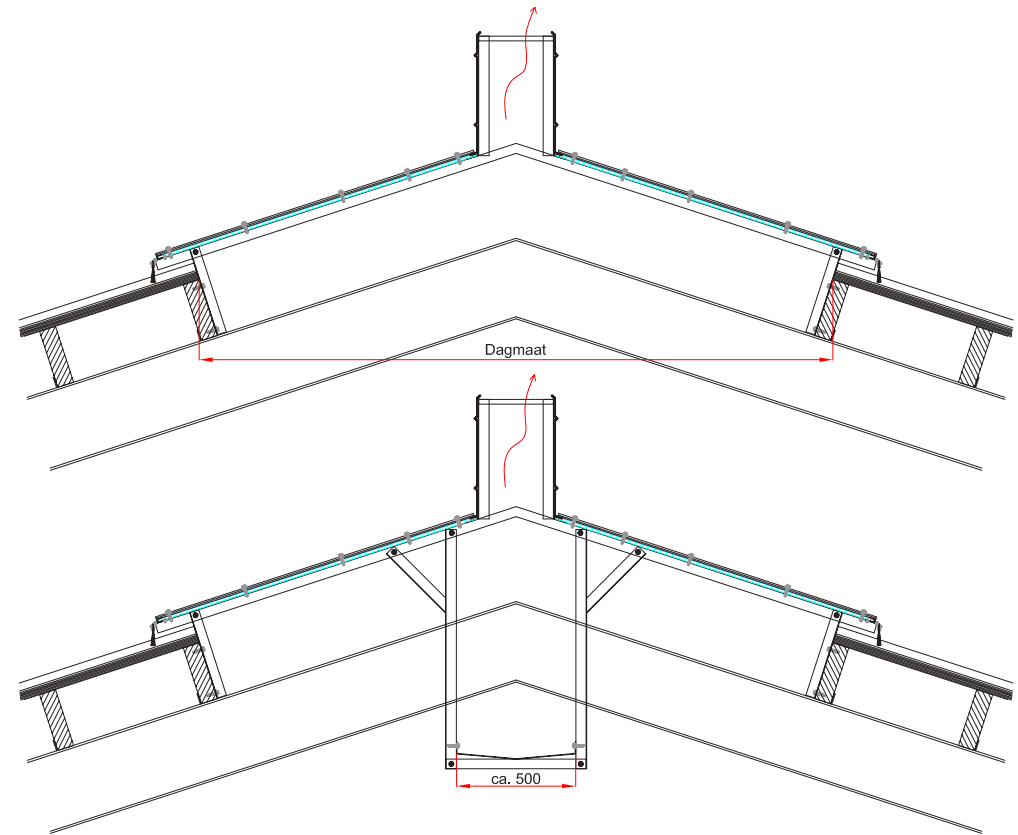
NEN 6065

### Fire category:

B1

### Protection:

UV-resistant, highly impact-resistant



OPTIONAL WITH  
LEAKING PATH



# Barn ridges

## OVERHANG RIDGE

### Operation

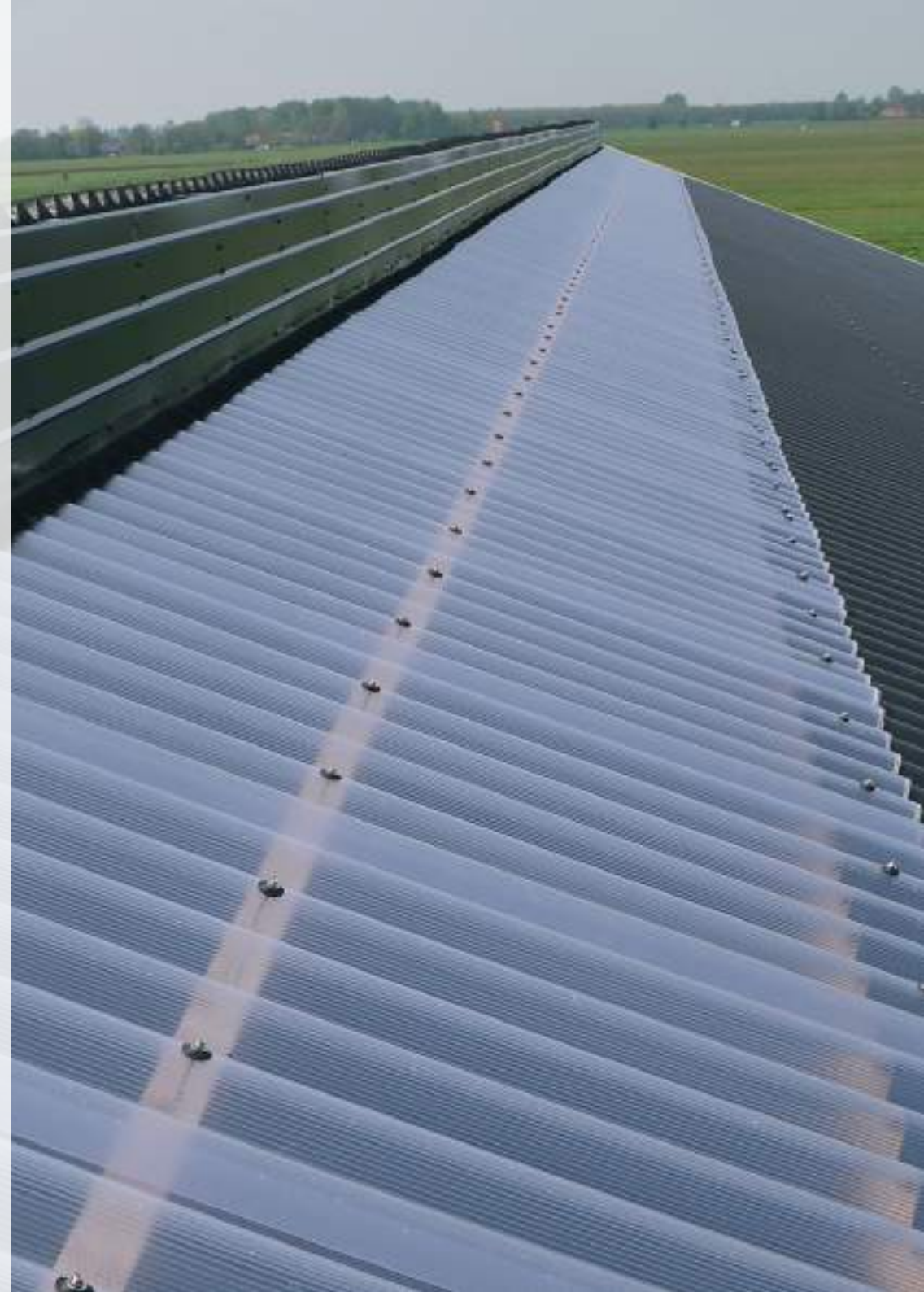
Airkoe supplies a variety of overhang ridges. Operators may go for a single or double-sided overhang, with or without a wind baffle plate, etc. Our overhang ridges consist of a sound aluminium frame with multi-layered polycarbonate sheets.

The overhang ridges are available in widths of up to 5,000 mm. For the right structural conditions, please contact Airkoe to guarantee worry-free fitting.

Since the ventilation hole is at the highest point, hot and spent air will escape from the barn. Since we manufacture each ridge to suit the customer's needs, we can guarantee the best possible ventilation. Available options include a clear or opaque light reflective sheet .

### Advantages:

- attractively priced
- aesthetically very pleasing





## Properties of the Overhang ridge:

### Light sheet:

Multi-layered polycarbonate light sheet

### Construction of the light sheet:

10 or 16 mm clear/opaque or athermic (new)

### Wind baffle plate:

Aluminium or plastisol  
(standard in RAL7016)  
Including brush connection.

### Aluminium profiles (construction):

Untreated aluminium

### Pattern:

1050 mm through to clear width 4000 mm  
700 mm from clear width 4000 mm

### NEN standardisation:

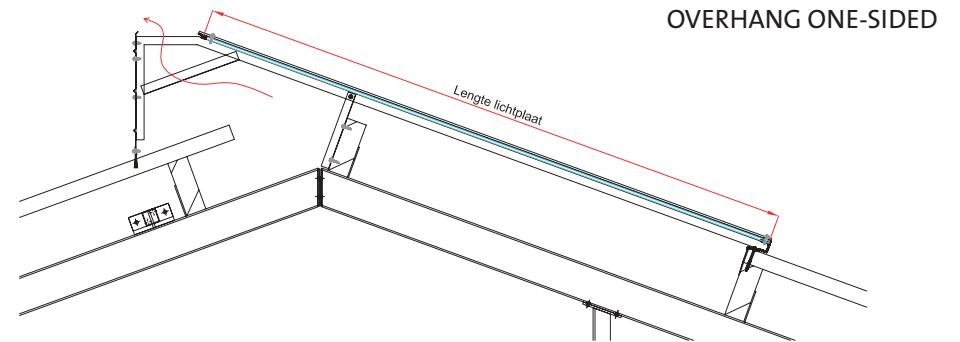
NEN 6065

### Fire category:

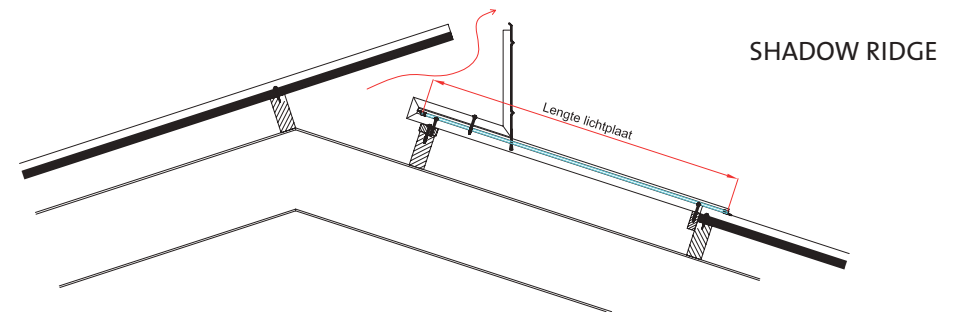
B1

### Protection:

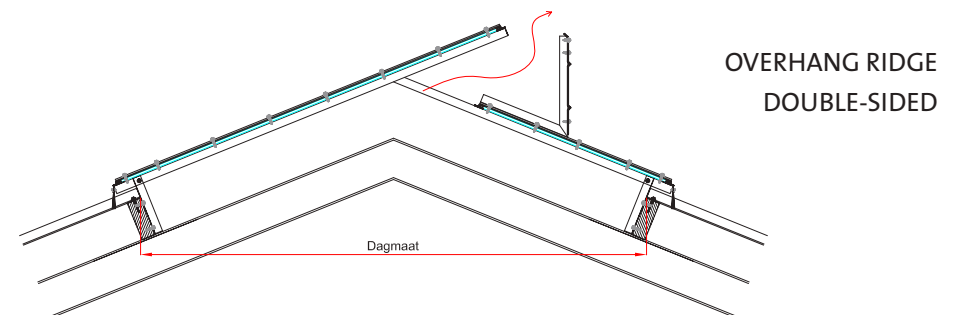
UV-resistant, highly impact-resistant



OVERHANG ONE-SIDED



SHADOW RIDGE



OVERHANG RIDGE  
DOUBLE-SIDED







# Assembly

Professionally delivered











# Construction

## Solid











# Specials







Contact:  
Dearsum nr3  
8644 VP Dearsum, The Netherlands  
+31 515 23 03 04



[www.airkoe.nl](http://www.airkoe.nl)

